



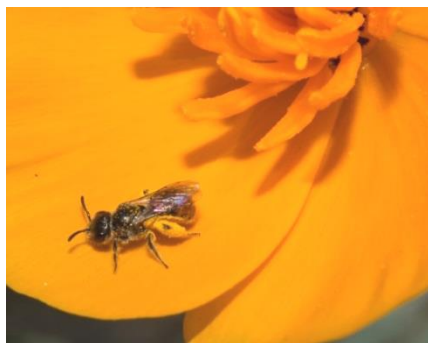
The Eaton Canyon Nature Center and Natural Area Park are located within the unincorporated area of Los Angeles County in the Supervisorial District of Kathryn Barger. The Natural Area and Nature Center are operated by the County of Los Angeles, Department of Parks and Recreation, in partnership with the Eaton Canyon Nature Center Associates.



**Parks
Make
Life
Better!**

We ♥ Bees

Come meet and learn about our AMAZING Bees



Date: Sunday, June 02, 2019
Time: 10 pm - 4 pm
Where: Eaton Canyon Nature Center
Cost: Free

**Special Bee Presentation by Bee Biologist Hartmut Wisch
for ECNCA Members Only
10 am - 12 pm**

Fun Learning for the Whole Family

- **Native Bee and Honey Bee Exhibits**
- **Bee Books and Bee Products**
- **Bee Friendly Plants Information**
- **Children's Crafts**
- **Book Signing**

Special Presenters include:

Lisa Gonzalez - Natural History Museum, BioSCAN Project, Entomology Dept.

Erin Johnson - Theodore Payne Foundation

Bee Specialist - Los Angeles County Beekeepers Association

Bee Specialist - Beekeepers Association of Southern California

Kat High - Native American Educator

Chip Vanoy - Beekeeper, Placerita Canyon

Sue Sutton - Honey Bee Biologist, Placerita Canyon

Diane Lang- Author of Children's Books: Vulture Verses and Fur, Feather, Fin – All of Us Are Kin

Eaton Canyon Nature Center, 1750 N Altadena Drive, Pasadena, CA 91107
For more information, call (626) 398-5420 or visit www.ecnca.org



The Pasadena Group is one of 16 regional groups within the Angeles Chapter, the largest chapter of the Sierra Club. Our mission statement: Explore, enjoy, and protect the wild places of the earth.

The Natural History Museum of Los Angeles County's vision is to inspire wonder, discovery, and responsibility for our natural and cultural worlds.



The California Native Plant Society (CNPS) is a statewide non-profit organization of amateurs and professionals with a common interest in California's native plants. The Society seeks to increase understanding of California's native flora and to preserve this rich resource for future generations. Membership is open to all. Our members have diverse interests including natural history, botany, ecology, conservation, photography, drawing, hiking, and gardening.

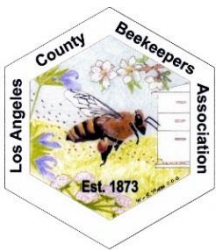
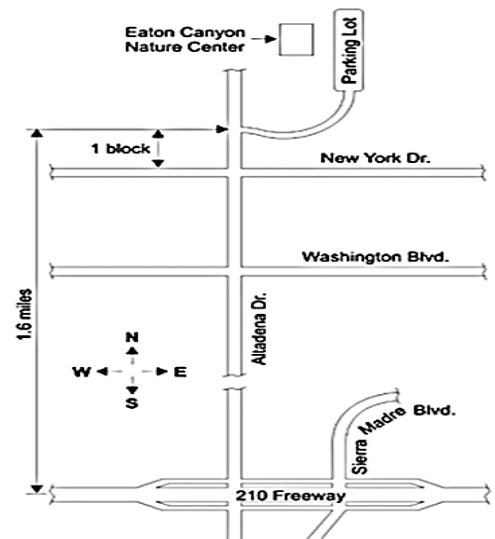
The Theodore Payne Foundation for Wild Flowers and Native Plants, established 1960, is a nonprofit 501(c)(3) organization dedicated to the understanding, preservation and use of California native flora. The Foundation preserves the legacy and carries on the work of Theodore Payne, a pioneering Los Angeles nurseryman, horticulturist and conservationist widely considered to be the father of the native plant movement in California.



Partners in this Event Include:

Natural History Museum
California Native Plant Society
(San Gabriel Mountains Chapter)
Pasadena Sierra Club
Theodore Payne Foundation
Los Angeles County Beekeepers Association
Beekeepers Association of Southern California
Placerita Canyon Nature Center Associates
The Altadena Community Garden

HOW TO GET TO EATON CANYON



The Los Angeles County Beekeepers Association was founded in 1873 to foster the interest of bee culture and beekeeping within Los Angeles County. The Association's primary purpose is the care and welfare of the honey bee. The membership is composed of commercial and small-scale beekeepers, bee hobbyists, and bee enthusiasts. The club is dedicated to educating the members and the general public about honey bees and the importance they play in our lives. The Association supports honeybee research and adhering to best management practices for the keeping of bees. The Association is a 501(c)(3) non-profit organization. 100% of the funds raised through donations go to honey bee education and research.

Beekeepers Association of Southern California is a non-profit organization founded in 1980 to serve the beekeeping community. It is a group dedicated to helping urban bees survive, networking, and helping new beekeepers. The group is formed by people who have beehives, want to have beehives, and are just interested in bees.



Placerita Canyon Nature Center Associates is a Chapter of Nature Center Associates of Los Angeles County. The Chapter's mission statement is to inspire a passion, awareness and respect for the environment, and to preserve and protect for future generations the history and ecosystem of Placerita Canyon.

The Altadena Community Garden is a non-profit organization that provides gardening space, information and education to Garden members and the local community. We believe that growing nutritional food and working outdoors in a group setting promotes healthy minds, spirits, and bodies. The Garden honors and appreciates the diversity, unique qualities, and cultural ideals of our gardeners and the community. By growing fresh food and tending the Garden together, we support harmony, cooperation, and healthy life choices for residents of Los Angeles County.

